

CONSTANT POWER DISCHARGE RATING (W) at 25°C

| | EMV | 10 min | 15 min | 20 min | 30 min | 60 min | 120 min | 180 min | 240 min | 300 min | 360 min | 480 min | 600 min |
|-------------------|------|--------|--------|--------|--------|--------|---------|---------|---------|---------|---------|---------|---------|
| | | 10.2V | 10.5V | 10.8V | | | | | | | | | |
| NXT+ 26Ah | 705 | 536 | 436 | 313 | 193 | 117 | 83 | 67 | 55 | 48 | 37 | 31 | |
| | 671 | 517 | 422 | 303 | 189 | 116 | 80 | 65 | 53 | 47 | 37 | 30 | |
| | 637 | 497 | 408 | 293 | 185 | 114 | 76 | 62 | 52 | 45 | 36 | 30 | |
| NXT+ 42Ah | 1022 | 825 | 671 | 507 | 305 | 185 | 134 | 108 | 88 | 78 | 61 | 50 | |
| | 1001 | 794 | 650 | 491 | 299 | 183 | 129 | 105 | 86 | 76 | 59 | 49 | |
| | 980 | 763 | 629 | 475 | 293 | 180 | 124 | 101 | 84 | 73 | 58 | 48 | |
| NXT+ 65Ah | 1660 | 1340 | 1090 | 823 | 496 | 300 | 207 | 168 | 137 | 121 | 94 | 78 | |
| | 1625 | 1290 | 1056 | 798 | 483 | 296 | 199 | 162 | 133 | 117 | 92 | 76 | |
| | 1590 | 1240 | 1022 | 772 | 470 | 292 | 191 | 156 | 130 | 113 | 90 | 74 | |
| NXT+ 75Ah | 1867 | 1500 | 1220 | 921 | 555 | 337 | 239 | 194 | 158 | 140 | 108 | 90 | |
| | 1828 | 1445 | 1185 | 893 | 541 | 333 | 227 | 186 | 154 | 135 | 106 | 87 | |
| | 1788 | 1389 | 1150 | 864 | 526 | 328 | 216 | 178 | 150 | 131 | 104 | 84 | |
| NXT+ 100Ah | 2416 | 1948 | 1583 | 1200 | 724 | 438 | 318 | 258 | 210 | 186 | 144 | 120 | |
| | 2370 | 1879 | 1537 | 1163 | 703 | 431 | 306 | 249 | 205 | 180 | 141 | 117 | |
| | 2323 | 1810 | 1491 | 1125 | 682 | 423 | 294 | 240 | 200 | 174 | 138 | 114 | |
| NXT+ 120Ah | 2899 | 2338 | 1899 | 1440 | 869 | 526 | 382 | 310 | 252 | 223 | 173 | 144 | |
| | 2844 | 2255 | 1844 | 1395 | 844 | 517 | 367 | 299 | 246 | 216 | 169 | 140 | |
| | 2788 | 2172 | 1789 | 1350 | 818 | 508 | 353 | 288 | 240 | 209 | 166 | 137 | |
| NXT+ 150Ah | 3624 | 2922 | 2375 | 1800 | 1086 | 657 | 477 | 387 | 315 | 279 | 216 | 180 | |
| | 3555 | 2819 | 2306 | 1744 | 1055 | 646 | 459 | 374 | 308 | 270 | 212 | 176 | |
| | 3485 | 2715 | 2237 | 1688 | 1023 | 635 | 441 | 360 | 300 | 261 | 207 | 171 | |
| NXT+ 200Ah | 4832 | 3896 | 3166 | 2400 | 1448 | 876 | 636 | 516 | 420 | 372 | 288 | 240 | |
| | 4739 | 3758 | 3074 | 2325 | 1406 | 861 | 612 | 498 | 410 | 360 | 282 | 234 | |
| | 4646 | 3620 | 2982 | 2250 | 1364 | 846 | 588 | 480 | 400 | 348 | 276 | 228 | |

EXIDE NXT+

Head Office

Kolkata

Exide Industries Limited, Exide House, 59E Chowringhee Road, Kolkata 700 020
Phone: (033) 2283 2120/33/35/50/71/ 2238/39, **Fax:** (033) 2283 2632/37

Corporate Marketing Office

Kolkata

6A Hatibagan Road, Entally, Kolkata 700 014
Phone: (033) 2286 6158/ 59, **Fax:** (033) 2286 6186, **Email:** indlcare@exide.co.in

Regional Office

New Delhi

Exide House, 8/42 Kirtinagar Industrial Area, opp MDH Spice Factory, New Delhi 110 015
Phone: (011) 4954 1600

Kolkata

6A Hatibagan Road, Entally, Kolkata 700 014
Phone: (033) 2284 3137/ 68/69, **Fax:** (033) 2289 7455

Mumbai

RAHEJAS, 5th floor, 8C Main Avenue, V P Road, Santacruz (West), Mumbai 400 054
Phone: (022) 2646 5283/84

Chennai

Exide Industries Limited, Navin's Presidium, A-Block 3rd Floor,
 103 A Nelson Manickam Road, Chennai 600 029
Phone: (044) 2374 7914

CALL (TOLL FREE) 1800 103 5454

EXIDE NXT+

WHEN A SPLIT SECOND MATTERS

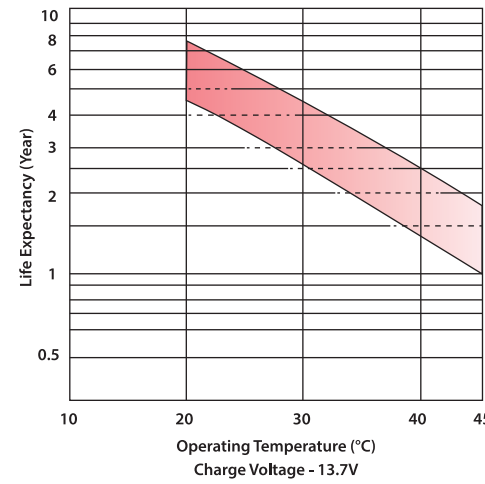
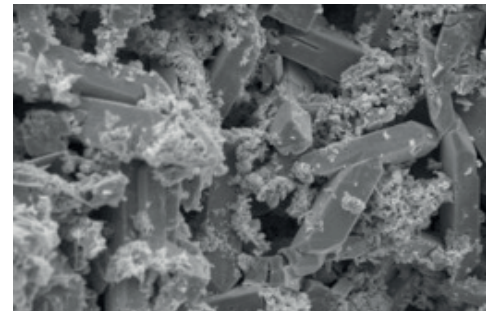
Presenting the unmatched Exide NXT+
 that ensures seamless power for your critical needs



 Unique Crystal Network
  Zero Disruption
  Fire Retardant

PREMIUM TECHNOLOGY FOR UPS APPLICATION

- Proprietary Pb-Ca-Sn alloy composition & state-of-the-art manufacturing process guarantee optimized grain structure for long float service life
- Unique Crystal Network enhances active material integrity
- 'Best-in-class' service life with 20% extended service life for long-lasting reliability
- Special additive to prevent corrosion of passive lead component in the battery thereby ensuring unfettered operation for its entire life
- Exclusive product range with UL 94 V0 class complied fire retardant plastic material for battery container and cover



GENERAL INFORMATION

| Construction | |
|--|--|
| Plates | Proprietary Pb-Ca-Sn alloy for positive & negative current collectors & flat pasted plates |
| Separator | Absorbent glass mat separator immobilizing the electrolyte |
| Plastic | Fire retardant V0 class (UL94) plastic material |
| Terminal | Terminals with large surface area provide maximum conductivity |
| Valves | Self-regulating pressure relief safety rubber valve |
| Operation | |
| Operating Temperature Range | 0°C - 45°C |
| Recommended Operating Temperature | 5°C - 35°C |
| Shelf-life | 6 months at 20°C, 3 months at 30°C |
| Design Float life | 10 years |
| Self-discharge per month | <3% of rated capacity at 25°C |
| Cycle Life at 30% DoD | 1200-1300 cycles at 25°C |
| Recommended Cable Rating | 2.8A / mm ² @ maximum discharge load |

CHARGING PARAMETERS- STANDBY OPERATION

| Recharge voltages: Batteries to be charged in CC-CV mode only | | |
|---|--|--|
| Recharge Voltages Type | Voltages settings per 12V unit for ambient temperature 20°C-30°C | Current setting |
| Float | 13.7 ± 0.1V | Maximum: 30% of rated Ah Minimum: 10% of rated Ah |
| Boost | 14.1 ± 0.1V | |
| Temperature Compensation (reference 25°C) | | -18mV /°C /12V unit |

PRODUCT RANGE

| Battery Type | NXT+26 | NXT+42 | NXT+65 | NXT+75 | NXT+100 | NXT+120 | NXT+150 | NXT+200 |
|---|----------|--------|-----------|--------|---------|---------|---------|---------|
| Nominal Voltage (V) | 12 | 12 | 12 | 12 | 12 | 12 | 12 | 12 |
| Rated Capacity @25°C 20 hour (up to 10.5V) | 26 | 42 | 65 | 75 | 100 | 120 | 150 | 200 |
| Length (mm) ± 3 | 178 | 201 | 350 | 391 | 407 | 452 | 536 | 536 |
| Width (mm) ± 3 | 124 | 165 | 166 | 166 | 173 | 172 | 186 | 250 |
| Height (mm) ± 3 | 179 | 181 | 181 | 183 | 235 | 239 | 250 | 250 |
| Weight (kg) ± 5% | 9 | 14 | 20 | 23 | 33 | 38 | 47 | 65 |
| Internal Resistance (mΩ) @25°C Fully Charged Condition | 10.0 | 8.0 | 5.5 | 5.3 | 5.0 | 4.5 | 3.9 | 3.3 |
| Max. Discharge Current (A) (5 sec) | 390 | 420 | 500 | 500 | 600 | 720 | 900 | 1200 |
| Short Circuit Current (A) | 696 | 922 | 1425 | 1767 | 2151 | 2619 | 3432 | 4431 |
| Plastic Material | ABS-FRVO | | PPCP-FRVO | | | | | |
| Terminal Torque (N-m) | 2.5 | 2.5 | 4.9 | 4.9 | 12.3 | 12.3 | 12.3 | 12.3 |
| Terminal Type | M5-Flag | | M6-Flag | | M8-Flag | M8-Bolt | | |

PRODUCT FEATURES

- Non-spillable Sealed Maintenance-free VRLA Battery • Absorbent Glass Mat Technology
- Internal Oxygen Recombination • Long Service Life • Low Self-Discharge • Excellent Charge Retention
- Superior High-rate Discharge • Flame Retardant V0 Plastic for Safety

GAS EVOLUTION

- Hydrogen gas evolved per hour = $2.7 \times 10^{-3} \times n \times I \text{ m}^3$ at NTP
- n = Number of 12V batteries
- I = float current under worst case application scenario = 2mA/Ah

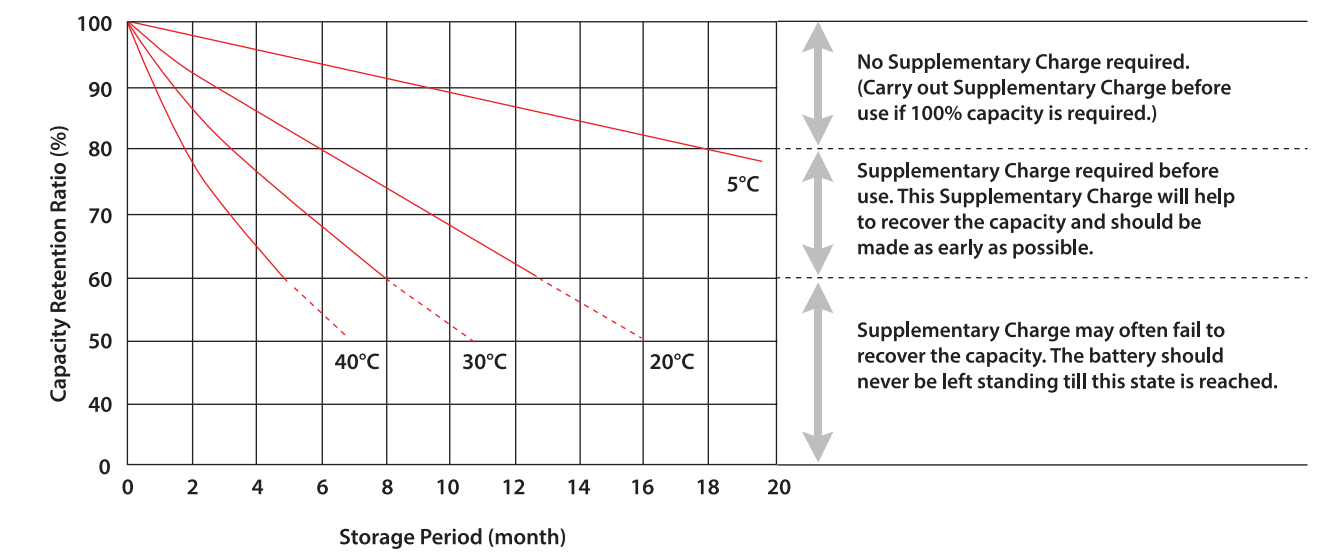
AIR FLOW CIRCULATION

- Required Air Flow = $d \times s \times (\text{hydrogen gas evolved per hour from battery bank}) \text{ m}^3/\text{hrb}$
- D = dilution ratio = $(100-4) / 4 = 24$
- Lower explosive limit for Hydrogen = 4% below which the air mixture will be too lean to burn
- S = factor of safety, e.g., s = 5

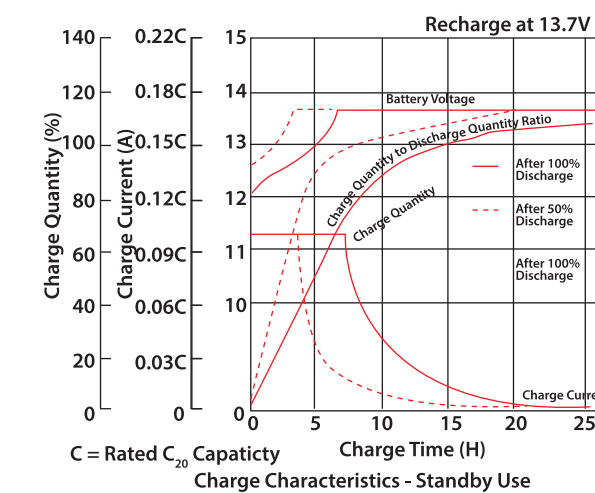
HEAT GENERATION

- Heat Generation = 2.7W/100Ah C20 Capacity/12V battery

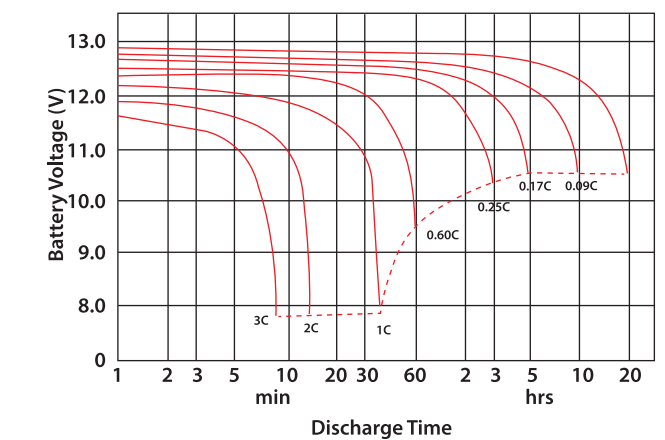
CAPACITY RETENTION & SUPPLEMENTARY CHARGE



CHARGE CHARACTERISTICS



DISCHARGE CHARACTERISTICS



CONSTANT CURRENT DISCHARGE RATING (A) at 25°C

| EMV | 10 min | 15 min | 20 min | 30 min | 60 min | 90 min | 120 min | 180 min | 240 min | 300 min | 360 min | 480 min | 600 min |
|--------------|--------|--------|--------|--------|--------|--------|---------|---------|---------|---------|---------|---------|---------|
| 10.2V | 2.3C | 1.8C | 1.5C | 1.15C | 0.67C | 0.48C | 0.40C | 0.290C | 0.230C | 0.190C | 0.165C | 0.130C | 0.108C |
| 10.5V | 2.15C | 1.72C | 1.45C | 1.12C | 0.65C | 0.45C | 0.38C | 0.28C | 0.22C | 0.18C | 0.150C | 0.120C | 0.098C |
| 10.8V | 2.0C | 1.65C | 1.4C | 1.1C | 0.64C | 0.42C | 0.36C | 0.270C | 0.210C | 0.170C | 0.145C | 0.110C | 0.090C |

C stands for C20 rated capacity